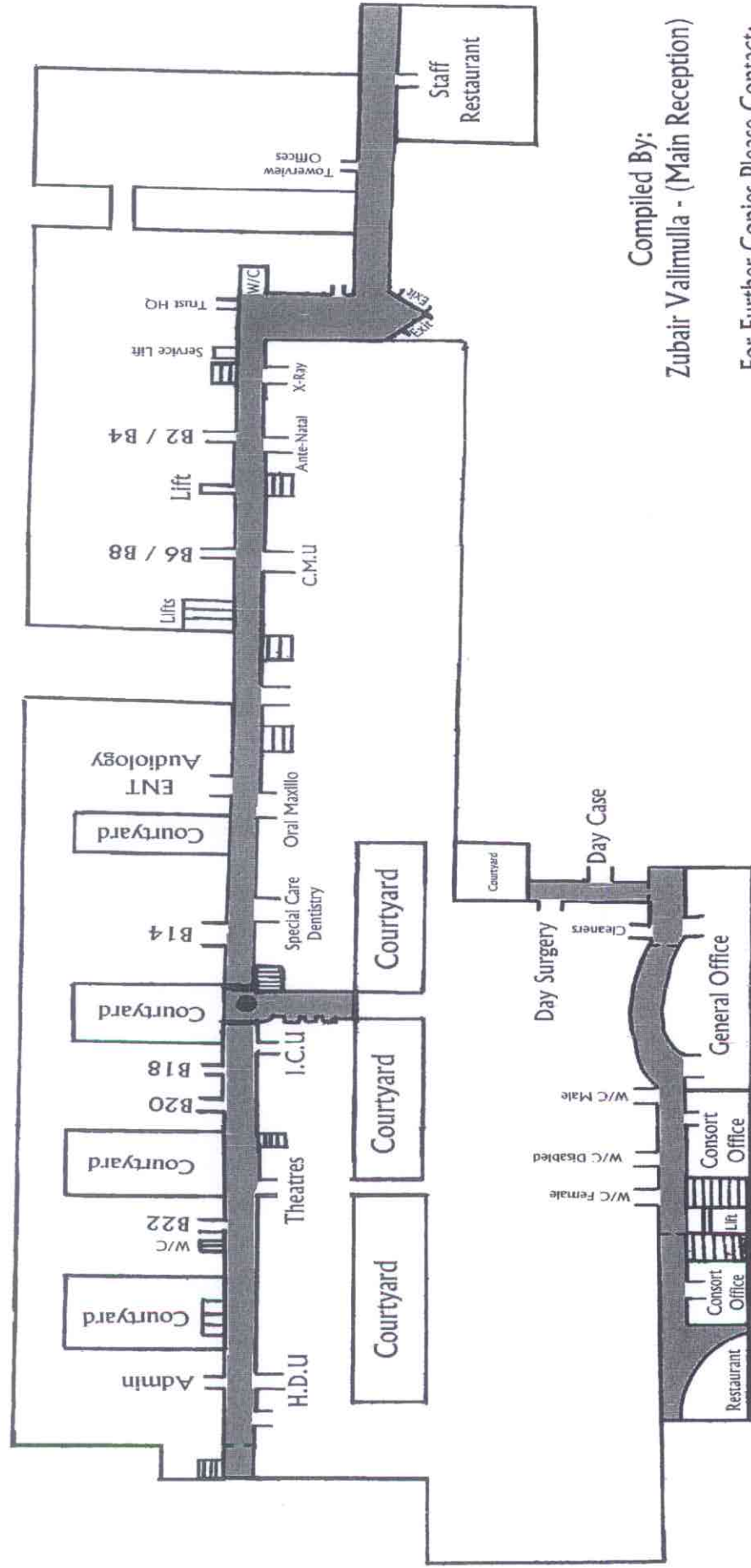




# Royal Blackburn Hospital

## Level 2 - BLUE



Compiled By:

Zubair Valimulla - (Main Reception)

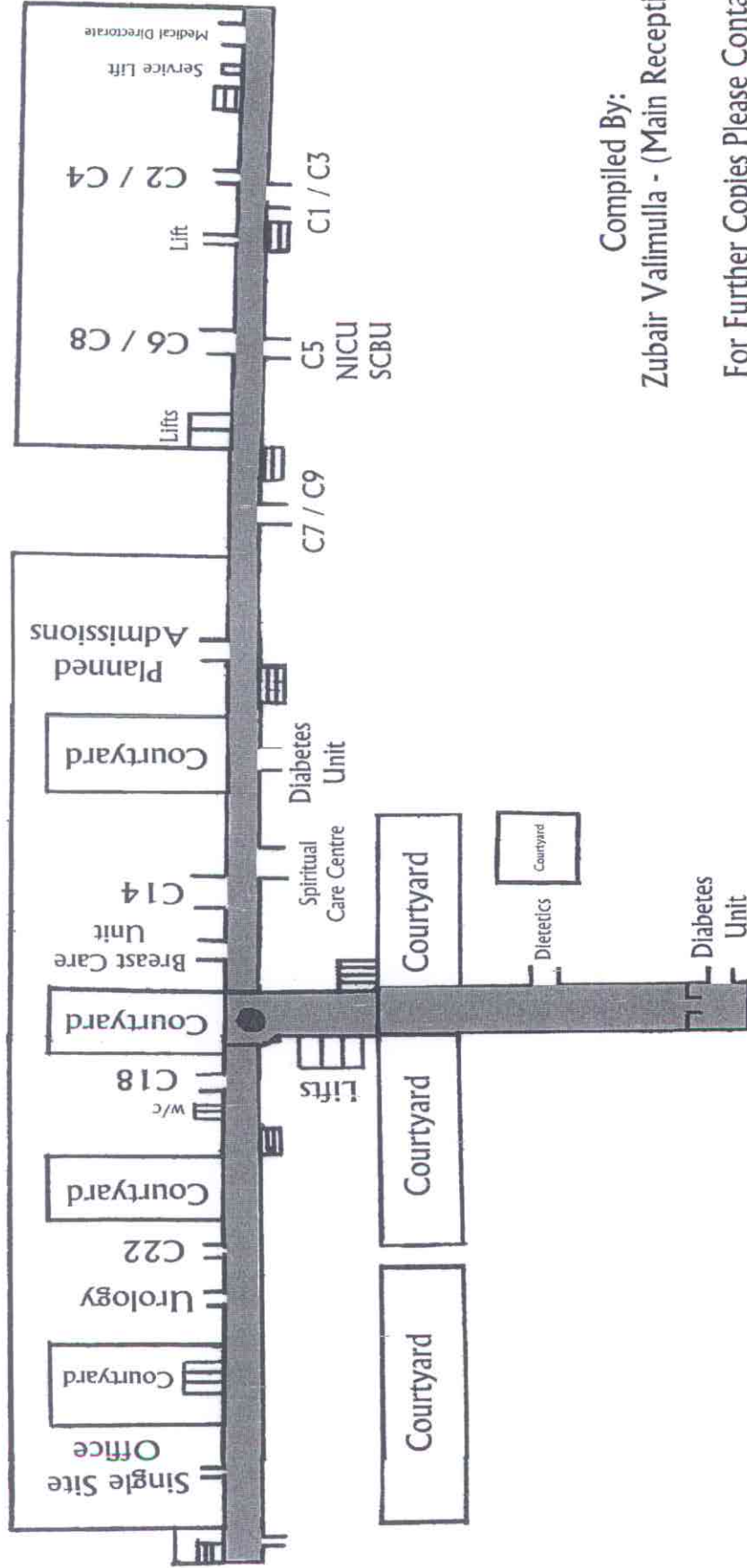
For Further Copies Please Contact:

Heather Blanche (Site Manager)

ext 84003

# Royal Blackburn Hospital

## Level 3 - GREEN

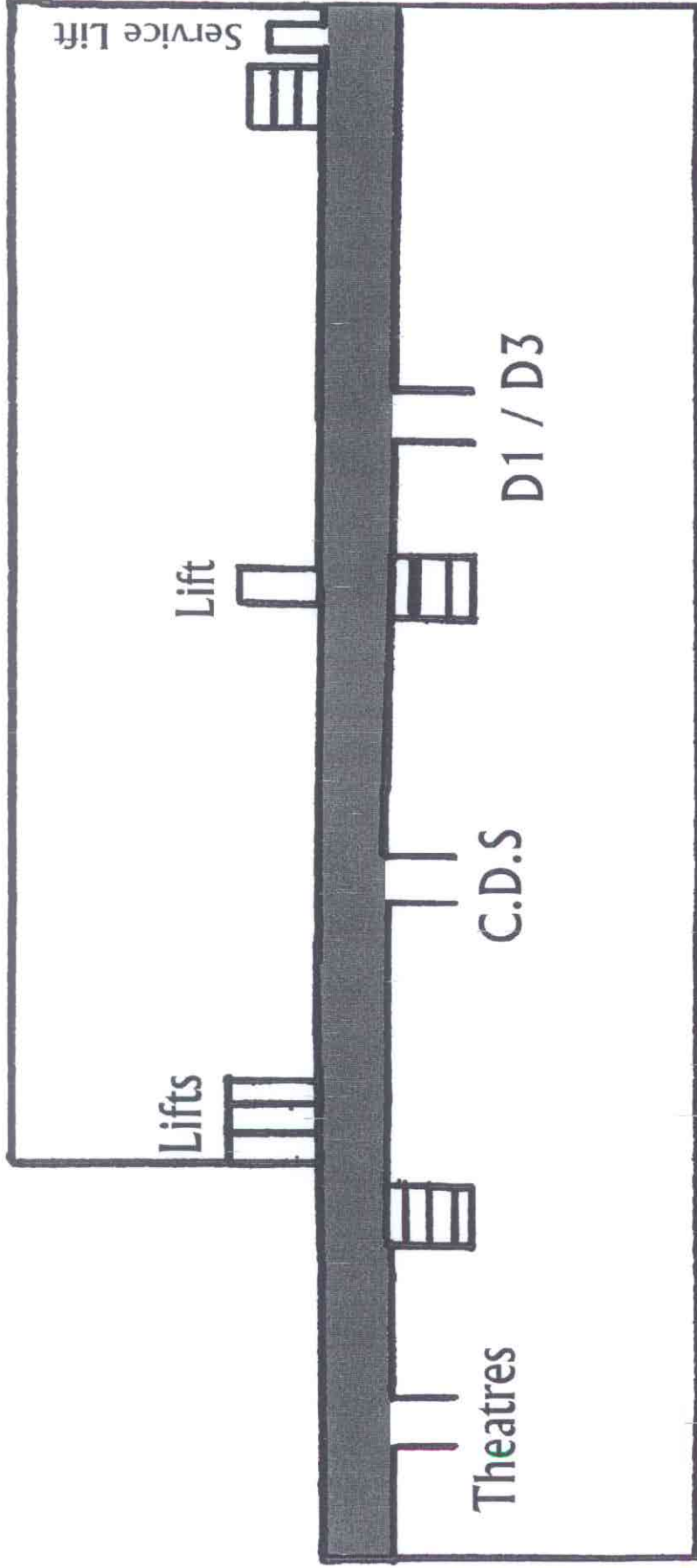


Compiled By:  
Zubair Valimulla - (Main Reception)

For Further Copies Please Contact:  
Heather Blanche (Site Manager)  
ext 84003

# Royal Blackburn Hospital

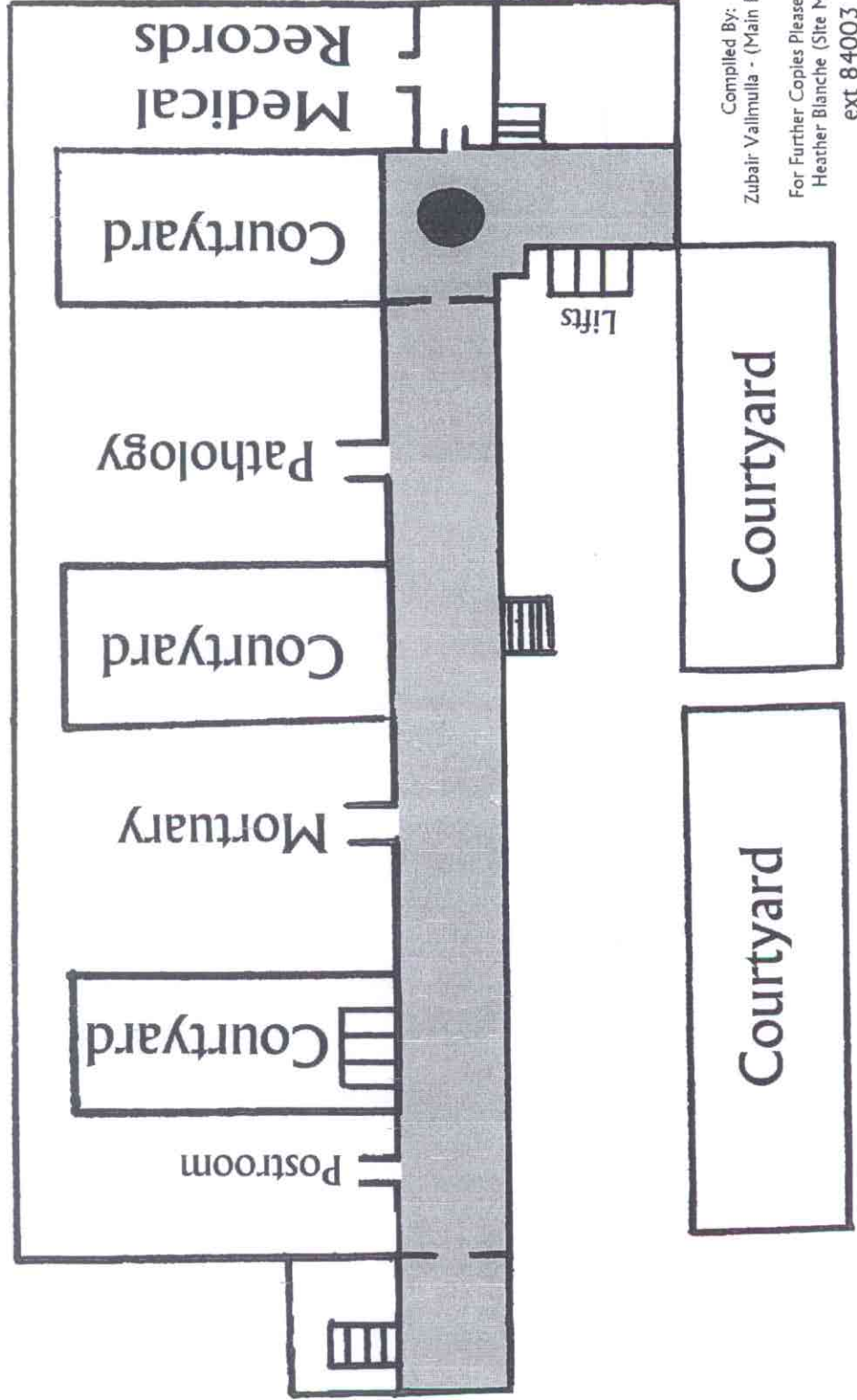
## Level 4 - RED



Compiled By:  
Zubair Valimulla - (Main Reception)  
For Further Copies Please Contact:  
Heather Blanche (Site Manager)  
ext 84003

# Royal Blackburn Hospital

## Level 0 - LILAC



Compiled By:  
Zubair Vallimulla - (Main Reception)

For Further Copies Please Contact:  
Heather Blanche (Site Manager)

ext 84003